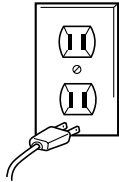


**WARNING:
IF YOU THINK
THE POWER IS
OFF WHEN THE
SWITCH IS OFF
YOU'RE WRONG.**

KEEP AWAY FROM WATER



Everyone knows that electricity and water are a dangerous combination. But did you know that an electric appliance is still electrically live even if the switch is off? If the plug is in, the power is on. So when you are not using your appliances, keep them unplugged.

**ALWAYS UNPLUG
SMALL APPLIANCES**

A Public Service Ad from the Association of Home Appliance
Manufacturers and Underwriters Laboratories, Inc.

ONE YEAR LIMITED WARRANTY

Conair will repair or replace (at our option) your unit free of charge for 12 months from the date of purchase if the appliance is defective in workmanship or materials.

To obtain service under this warranty, return the defective product to the service centre listed below that is nearest you, together with your purchase receipt and \$7.50 for postage and handling.

This warranty gives you specific legal rights, and you may also have other rights, which vary from province to province.

For Service: Please bring or send defective unit with sales slip to the nearest service centre listed below.

SERVICE CENTRE:

CONAIR CONSUMER PRODUCTS INC.

156 Parkshore Drive,
Brampton, Ontario
L6T 5M1

1-800-472-7606

©2002 CONAIR CONSUMER PRODUCTS INC.

02CN1132

CONAIR®

Aircare™

**1 1/2" Hot Air
Curling Iron
and Brush**

**Instruction/
Styling Guide**

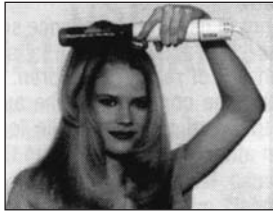
IB-2170C

HOW TO STYLE WITH YOUR HOT AIR CURLING IRON/BRUSH

HOT AIR CURLING IRON



Apply mousse or light gel evenly through hair. Partially dry hair by blow drying or letting hair dry naturally.



When hair is almost dry, separate hair into small sections and, with the 1 1/2" Hot Air Curling Iron, make 1 & 1/2 turns to create soft, open curls. Direct each curl in a slightly different angle. Lightly mist with finishing spray.

HOT AIR BRUSH



Partially dry hair by either blow-drying or letting the hair dry naturally. When hair is almost dry, use the 1 1/2" Hot Air Brush to create lift, volume and large, soft curls.



Beginning at the crown area, take a section of hair and place the 1 1/2" Hot Air Brush near the root area. Slide the hot air brush toward the ends, then wind toward the root area. Hold for approximately 10 seconds, then gently unwind the hair without tension. Continue throughout the hair until all the hair has been curled.

NOTE: To achieve maximum body, fullness and curl, apply styling gel to the root area and styling mousse to the ends. Then take small sections of the hair, and curl it with the 1 1/2" Hot Air Brush.

IMPORTANT SAFETY INSTRUCTIONS

When using electrical appliances, especially when children are present, basic safety precautions should always be followed, including the following:

READ ALL INSTRUCTIONS BEFORE USING KEEP AWAY FROM WATER

DANGER — Any appliance is electrically live even when the switch is off.

To reduce the risk of death or injury by electric shock:

1. Always “unplug it” immediately after using.
2. Do not use while bathing or in a shower.
3. Do not place or store appliance where it can fall or be pulled into a tub or sink.
4. Do not place in, or drop into, water or other liquid.
5. If an appliance falls into water, “unplug it” immediately. **Do not reach into the water.**

WARNING — To reduce the risk of burns, electrocution, fire, or injury to persons:

1. **This appliance should never be left unattended when plugged in. Do not pull, twist, or wrap line cord around appliance.**
2. Close supervision is necessary when this appliance is used by, on, or near children or invalids.

3. Use this appliance only for its intended use as described in this manual. Do not use attachments not recommended by the manufacturer.

4. Never operate this appliance if it has a damaged cord or plug, if it is not working properly, if it has been dropped or damaged, or dropped into water. Return the appliance to an authorized service centre for examination and repair.

5. Keep the cord away from heated surfaces. Do not wrap the cord around appliance.

6. Never block the air openings of the appliance or place it on a soft surface, such as a bed or couch, where the air openings may be blocked. Keep the air openings free of lint, hair, and the like.

7. Never use while sleeping.

8. Never drop or insert any object into any opening or hose.

9. Do not use outdoors or operate where aerosol (spray) products are being used or where oxygen is being administered.

10. This appliance is hot when in use. Do not let heated surfaces touch are skin.

11. Do not place the heated appliance directly on any surface while it is hot or plugged in. Use the built-in counter rest.

12. Do not place appliance on any surface while it is operating.

13. While using the appliance, keep your hair out of it. Keep your hair away from the air inlets.

14. Do not operate with a voltage converter.

15. This appliance was set at the factory to operate at 125 volts.

16. Do not direct hot air toward eyes or other heat sensitive areas.

17. Do not use an extension cord with this appliance.

18. Be sure dual voltage selector is in correct voltage position before operating. Before plugging in, read the information about dual voltage contained in the instruction section of this manual.

19. This appliance was set at the factory to operate at 125 volts. Refer to Additional Information section of this manual for conversion to 250 volt operation.

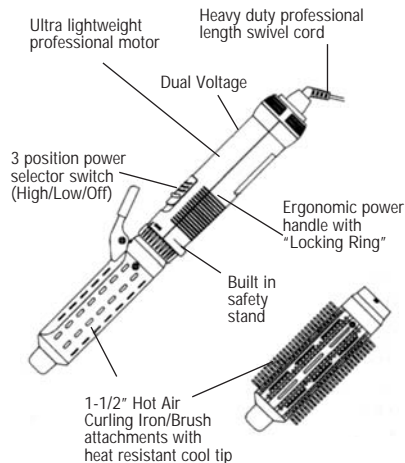
SAVE THESE INSTRUCTIONS

OPERATING INSTRUCTIONS

This appliance is intended for household use. Use on Alternating Current (60 hertz) only. Standard curling appliances are designed to operate at 110 to 125 volts AC.

This appliance has a polarized plug (one blade is wider than the other.) As a safety feature, this plug will fit in a polarized outlet only one way. If the plug does not fit fully in the outlet, reverse the plug. If it still does not fit, contact a qualified electrician. Do not attempt to defeat this safety feature.

GET TO KNOW YOUR HOT AIR BRUSH



USER MAINTENANCE

Your appliance is virtually maintenance free. For proper performance, the appliance must be kept clean. Blocked or clogged air intake vents will cause the appliance to overheat. When cleaning is needed, unplug the cord and clean dust and lint from air intake openings with a small brush attachment. The outer surface of the appliance should be wiped clean with a damp cloth only. If abnormal conditions occur, unplug the appliance, allow it to cool and return it for repair to an authorized service representative only. No repairs should be attempted by the consumer.

CAUTION — NEVER allow the power supply cord to be pulled or twisted. Never wrap the cord around the appliance. Damage will occur at the high flex point of entry into the appliance causing it to rupture and short.

Inspect the cord frequently for damage. STOP USE IMMEDIATELY if damage is visible or if unit stops or operates intermittently.

STORAGE

When not in use, your appliance should be disconnected and stored in a safe, dry location out of reach of children. Do not wrap the line cord around the appliance. Allow the cord to hang or lie loose and straight at the point of entry into the appliance.



This message about...

GROUND
FAULT
CIRCUIT
INTERRUPTERS

...can save a life!

IF YOU MUST USE YOUR APPLIANCE IN THE BATHROOM, INSTALL A GFCI* NOW!

Your local electrician can help you decide which type is best for you—a portable unit that plugs into the electrical outlet or a permanent unit installed by your electrician. The National Electrical Code now requires GFCI's in the bathrooms, garages, and outdoor outlets of all new homes.

WHY DO YOU NEED A GFCI? Electricity and water don't mix. If your hot air brush falls in water while it's plugged in, the electric shock can kill you...even if the switch is "off." A regular fuse or circuit breaker won't protect you under these circumstances. A GFCI offers you far greater protection.



A GFCI can save your life! Compared to that, the price is small! Don't wait... install one now!

*GFCI is a sensitive device which reacts immediately to a small electric current leak by stopping the electricity flow. It will provide you with more protection, additional to what you get with your safety device.

ADDITIONAL INFORMATION

FOR DUAL-VOLTAGE APPLIANCE

For use in North America, the voltage selector switch should be placed in the 125 position. For use in several countries overseas, the voltage selector may need to be placed in the 250 position. Confirm the voltage available at each overseas location before using the appliance. For connection to a 240 volt supply, use an attachment plug adapter of the proper configuration for the power supply receptacle.

For 110-125 Volt Operation

Flick the dual voltage switch to the 125 position. In this position, the dryer has two settings. It provides two speeds and two heats - low speed and low heat on LO and high speed and high heat on HI.

For 220-250 Volt Operation

First put the HI-LO switch into LO. Flick the dual voltage switch to the 250 position. At 220-250V while set at LO, the dryer operates only at high speed with high heat. **Do not attempt to operate the HI-LO switch or change to 125 when operating on 220-250V. The switches must be set and remain in the LO and 250 positions.** A plug adapter may be necessary in certain countries.