

mini
you
CURL™

For your safety and continued enjoyment of this product, always read the instruction book carefully before using.



HAVE A QUESTION?

Please do not return this product to the retailer.

CALL US FIRST!

Our customers service and product experts are ready to answer **ALL** your questions. Please call our **TOLL-FREE** customer service number at :

1-800-472-7606

Or visit us online at

www.conaircanada.ca

CONAIR®

Instruction & Styling Guide

Model CD64XRC

SERVICE CENTRE:

CONAIR CONSUMER PRODUCTS INC.
100 Conair Parkway
Woodbridge, ON L4H 0L2
©2012 CONAIR CONSUMER
PRODUCTS INC.

For more information on any Conair product call: 1-800-472-7606
www.conaircanada.ca
Consumer Call Centre E-mail :
Consumer_Canada@Conair.com

12CN135381

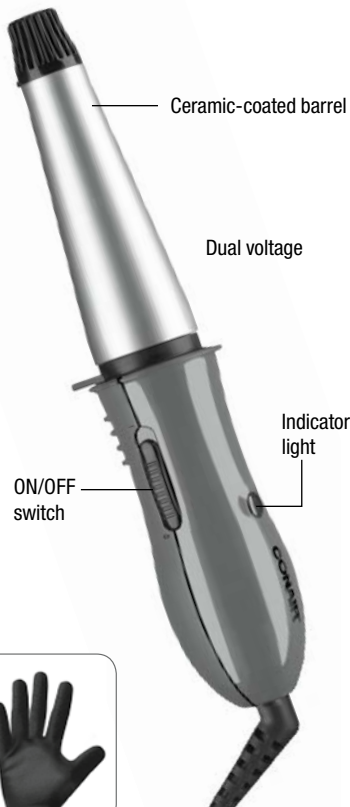
IB-11752

IMPORTANT

A universal heat protective glove has been supplied to help protect the hand from temporary contact with the barrel when wrapping the hair around the appliance.

Please note that the heat protective glove is only designed to give initial contact protection. Discomfort will occur with prolonged contact with the hot surface.

GET TO KNOW YOUR CERAMIC CURLING IRON



Universal Heat Protective Glove

LIMITED TWO-YEAR WARRANTY

Conair will repair or replace, at our option, your appliance free of charge for 24 months from the date of purchase if the appliance is defective in workmanship or materials.

To obtain service under this warranty, return the defective product to the service center listed on back, together with your sales slip and \$7.50 for postage and handling. In the absence of a receipt, the warranty period shall be 24 months from the date of manufacture.

ANY IMPLIED WARRANTIES, OBLIGATIONS, OR LIABILITIES, INCLUDING BUT NOT LIMITED TO THE IMPLIED WARRANTY OF MERCHANTABILITY AND FITNESS FOR A PARTICULAR PURPOSE, SHALL BE LIMITED IN DURATION TO THE 24-MONTH DURATION OF THIS WARRANTY.

IN NO EVENT SHALL CONAIR BE LIABLE FOR ANY SPECIAL, INCIDENTAL, OR CONSEQUENTIAL DAMAGES FOR BREACH OF THIS OR ANY OTHER WARRANTY, EXPRESS OR IMPLIED, WHATSOEVER.

This warranty gives you specific legal rights, and you may also have other rights which vary from province to province.

16. Do not use with a voltage converter.

SAVE THESE INSTRUCTIONS OPERATING INSTRUCTIONS

This unit is designed to operate at 120-240 volts AC. Use on Alternating Current (50/60 hertz) only. This appliance has a polarized plug (one blade is wider than the other). As a safety feature, this plug will fit in a polarized outlet only one way. If the plug does not fit fully in the outlet, reverse the plug. If it still does not fit, contact a qualified electrician. Do not attempt to defeat this safety feature.

DUAL VOLTAGE

This curling iron will automatically adjust to the proper voltage. Use an adapter plug with correct configuration prior to use in outlet.

CURLING BASICS

Plug the cord of the iron into any 120V-240V household outlet. Slide switch to "I" (ON) position; red light will indicate power is on. The iron will heat up very quickly. To turn off, slide switch to "O" (OFF) position and red light will go off. Never leave your curling iron unattended.

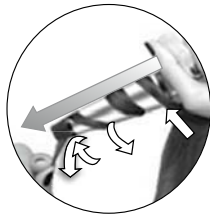
WARNING: The iron's ceramic-coated barrel will get extremely hot within a few seconds after being turned on. Never let the barrel touch the skin when the iron is on.



TO CURL HAIR

For best results, use a light styling product before blow-drying hair.

- 1 Take a 1 inch (2.5 cm) wide section of hair, starting 2 inches (5 cm) from the scalp.
- 2 Wind the section of hair around the thicker portion of the barrel towards the cool tip.



- 3 Hold the end of the hair in place at the cool tip for 5 to 8 seconds depending on hair type, and then release. No clamp allows you to easily curl hair without kinks. For tighter, bouncier curls, roll less hair. For loose, free flowing curls, roll more hair. To "set" the curl, do not comb or brush hair until it cools.
- 4 Repeat process on additional sections of hair until you achieve the hair style you desire. Some experience is necessary when learning to use this curling wand. After using several times, you will learn the ideal way to curl and style your hair.

USER MAINTENANCE

Your curling iron is virtually maintenance-free. No lubrication is needed. Keep all vents and openings clear of dirt and dust. If cleaning becomes necessary, disconnect the unit from the power source, allow to cool and wipe exterior with a cloth. If any abnormal condition occurs, unplug the unit, allow it to cool, and return it for repair to an authorized service center only. No repairs should be attempted by the consumer.

CAUTION

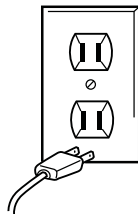
NEVER allow the power supply cord to be pulled, twisted, or severely bent. Never wrap the cord tightly around the appliance. Damage will occur at the high flex point of entry into the appliance, causing it to rupture and short. Inspect the cord frequently for damage. Stop use immediately if damage is visible or if unit stops or operates intermittently.

STORAGE

When not in use, your appliance is easy to store. Allow appliance to cool, then simply store out of reach of children in a safe, dry location. Do not jerk or strain cord at plug connections. Do not wrap the line cord around the appliance. Allow the cord to hang or lie loose and straight at the point of entry into the appliance.

**WARNING:
IF YOU THINK
THE POWER IS OFF
WHEN THE SWITCH
IS OFF,
YOU'RE WRONG.**

KEEP AWAY FROM WATER



Everyone knows that electricity and water are a dangerous combination. But did you know that an electric appliance is still electrically live even if the switch is off? If the plug is in, the power is on. So when you are not using your appliances, keep them unplugged.

**ALWAYS UNPLUG
SMALL APPLIANCES**

IMPORTANT SAFETY INSTRUCTIONS

When using electrical appliances, especially when children are present, basic safety precautions should always be followed, including the following:

READ ALL INSTRUCTIONS BEFORE USING *KEEP AWAY FROM WATER*

DANGER — Any appliance is electrically live even when the switch is off. To reduce the risk of death by electric shock:

1. **Always unplug appliance immediately after using.**
2. Do not use while bathing or in a shower.
3. Do not place or store appliance where it can fall or be pulled into a tub or sink.
4. Do not place in, or drop into water or other liquids.
5. If an appliance falls into water, unplug it immediately. **Do not reach into the water.**

WARNING — To reduce the risk of burns, electrocution, fire, or injury to persons:

1. **This appliance should never be left unattended when plugged in.**
2. Close supervision is necessary when this appliance is used by, on, or near children or individuals with certain disabilities.
3. Use this appliance only for its intended use as described in this manual. Do not use attachments not recommended by the manufacturer.

4. Do not use an extension cord to operate appliance.
5. **Never operate this appliance if it has a damaged cord or plug, if it is not working properly, if it has been dropped or damaged, or dropped into water. Return the appliance to an authorized service centre for examination and repair.**
6. **Keep the cord away from heated surfaces. Do not pull, twist, or wrap line cord around appliance, even during storage.**
7. Never block the air openings of the appliance or place it on a soft surface, such as a bed or couch, where the air openings may be blocked. Keep the air openings free of lint, hair, and the like.
8. Never use while sleeping.
9. Never drop or insert any object into any opening or hose.
10. Do not use outdoors or operate where aerosol (spray) products are being used or where oxygen is being administered.
11. This curling iron is hot when in use. Do not let heated surfaces touch eyes or skin.
12. **Do not place the heated curling iron directly on any surface or on the appliance power cord while it is hot or plugged in. Use stand that is provided.**
13. Before plugging in, read the information about dual voltage contained in the operating instructions section of this manual.
14. Do not attempt to touch the housing of your appliance near the curling barrel, as it is hot when in use.
15. Do not touch hot surfaces of the appliance. Use the handles or knobs.