

**mini**  
**you**  
WAVE™

Have a Question?

*Please do not return this  
product to the retailer.*

**Call Us First!**

r u s m s v and product experts  
r e e y a w All your questions

lease call our TOLL-FREE customer

service number at:

1-800-472-7606

Or visit us online at [www.conaircanada.ca](http://www.conaircanada.ca)



For your safety  
and continued  
enjoyment of this  
product, always  
read the instruction  
book carefully  
before using.

**CONAIR®**

**Instruction & Styling Guide**  
Model S8XRC

IB-12450

13CN145303

**SERVICE CENTRE**

Conair Consumer Products LLC

100 Conair Parkway,

Woodbridge, Ontario, L4H 0L2.

1-800-472-7606

©2013 Conair Consumer Products LLC

[www.conaircanada.ca](http://www.conaircanada.ca)

Consumer Call Centre E-mail :

[Consumer\\_Canada@Conair.com](mailto:Consumer_Canada@Conair.com)

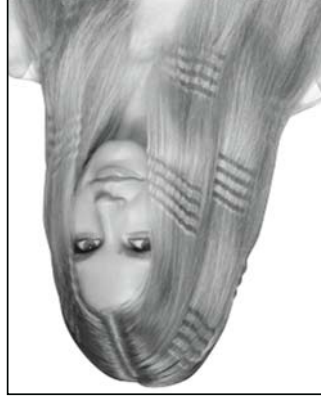
## GET TO KNOW YOUR CERAMIC DEEP WAVE STYLER



## STYLING WITH THE NEW EASY-GLIDE CERAMIC-COATED BARRELS

The barrels of your new styling iron have an easy-glide ceramic surface, the latest in technological advances. The ceramic even heat distribution produces the ultimate in healthy, shiny, silky looking hair. You'll find that hair glides easily over the iron's surface and that it is easier to clean styling products residue, etc. off the styler after each use. The ceramic surface also helps smooth down flyways and frizzes. As you smooth your hair, heat is evenly distributed so that the style you create has a salon-perfect, silky smooth, shiny finish.

The new ceramic technology is a pleasure to work with, makes styling your hair easier and provides professional results.



**Easily creates body, texture and waves**

## STYLING BASICS

Plug the iron cord into any electrical outlet 120–240V. Slide switch to ON position. Red LED light will indicate power is on. The iron will heat up very quickly. To turn off, slide to OFF position. Red light will go off. Never leave your styling iron on and unattended.

**WARNING: The styling iron's ceramic-coated barrels will get very hot within a few seconds and should not be placed in contact with the skin after the styling iron has been turned on.**

## TO CREATE DEEP WAVES

For best results, use a light styling product before blow-drying hair. Start with a section of hair that is 2 inches wide and place hair in between barrels. Starting at the scalp, lightly clamp, moving towards the ends of your hair. Hold the styler 5–10 seconds prior to releasing and sliding down. This process requires some overlapping to create waves in the hair. Repeat the process until you have achieved the look you desire.

Some experience is necessary when learning to use this styler. After using the styler several times, you will learn the ideal way to style your hair easily.

# OPERATING INSTRUCTIONS

This unit is designed to operate at 120–240 volts AC. Use on Alternating Current (50/60 hertz) only. This appliance has a polarized plug (one blade is wider than the other). As a safety feature, this plug will fit in a polarized outlet only one way. If the plug does not fit fully in the outlet, reverse the plug. If it still does not fit, contact a qualified electrician. Do not attempt to defeat this safety feature.

When putting on the table, the unit should be in correct position. The two barrels should be facing upward.

## DUAL VOLTAGE

This styling iron will automatically adjust to the proper voltage. Use an adapter plug with correct configuration, prior to use in outlet.

## LIMITED TWO-YEAR WARRANTY

Conair will repair or replace (at our option) your unit free of charge for 24 months from the date of purchase if the appliance is defective in workmanship or materials.

To obtain service under this warranty, return the defective product to the service centre listed below, together with your purchase receipt and \$5.50 for postage and handling. In the absence of a purchase receipt, the warranty period shall be 24 months from the date of manufacture.

**ANY IMPLIED WARRANTIES, OBLIGATIONS, OR LIABILITIES, INCLUDING BUT NOT LIMITED TO THE IMPLIED WARRANTY OF MERCHANTABILITY AND FITNESS FOR A PARTICULAR PURPOSE, SHALL BE LIMITED IN DURATION TO THE 24-MONTH DURATION OF THIS WRITTEN, LIMITED WARRANTY. IN NO EVENT SHALL CONAIR BE LIABLE FOR ANY SPECIAL, INCIDENTAL, OR CONSEQUENTIAL DAMAGES FOR BREACH OF THIS OR ANY OTHER WARRANTY, EXPRESS OR IMPLIED, WHATSOEVER.**

This warranty gives you specific legal rights, and you may also have other rights, which vary from province to province.

Due to continued product enhancements, the product featured may differ slightly from the actual product purchased.

# IMPORTANT SAFETY INSTRUCTIONS

When using electrical appliances, especially when children are present, basic safety precautions should always be followed, including the following:

## READ ALL INSTRUCTIONS BEFORE USING

## KEEP AWAY FROM WATER

### **DANGER**

- Any appliance is electrically live even when the switch is off. To reduce the risk of death by electric shock:

**1. Always unplug appliance immediately after using.**

2. Do not use while bathing or in a shower.

3. Do not place or store appliance where it can fall or be pulled into a tub or sink.

4. Do not place in, or drop into water or other liquids.

5. If an appliance falls into water, unplug it immediately. **Do not reach into the water.**

### **WARNING**

- To reduce the risk of burns, electrocution, fire, or injury to persons:

**1. This appliance should never be left unattended when plugged in.**

2. This appliance should not be used by, on, or near children or individuals with certain disabilities.

3. Use this appliance only for its intended use as described in this manual. Do not use attachments not recommended by the manufacturer.

4. Do not use an extension cord with this appliance.

# SAVE THESE INSTRUCTIONS

5. Never operate this appliance if it has a damaged cord or plug, if it is not working properly, if it has been dropped or damaged, or dropped into water. Return the appliance to an authorized service center for examination and repair.

6. Keep the cord away from heated surfaces.

7. Do not pull, twist, or wrap line cord around appliance, even during storage.

8. Never block the air openings of the appliance or place it on a soft surface, such as a bed or couch, where the air openings may be blocked. Keep the air openings free of lint, hair, and the like.

9. Never use while sleeping.

10. Never drop or insert any object into any opening. 11. Do not use outdoors or operate where aerosol (spray) products are being used or where oxygen is being administered.

12. This styling iron is hot when in use. Do not let heated surfaces touch eyes or skin.

**13. Do not place the heated styling iron directly on any surface or on the appliance power cord while it is hot or plugged in.**

14. Before plugging in read the information about dual voltage contained in the instruction section of this manual.

15. Do not attempt to touch the housing of your appliance near the barrel as it is hot when in use. 16. Do not touch hot surfaces of the appliance. Use the handles or knobs.

17. Do not use with a voltage converter.

## USER MAINTENANCE

Your styler is virtually maintenance-free. No lubrication is needed. Keep all vents and openings clear of dirt and dust. If cleaning becomes necessary, disconnect the unit from the power source, allow to cool and wipe exterior with a cloth. If any abnormal condition occurs, unplug the unit, allow it to cool, and return it for repair to an authorized service representative only. No repairs should be attempted by the consumer.

## CAUTION

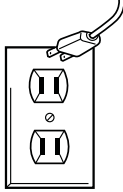
NEVER allow the power supply cord to be pulled, twisted, or severely bent. Never trap the cord tightly around the appliance. Damage will occur at the high flex point of entry into the appliance, causing it to rupture and short. Inspect the cord frequently for damage. Stop use immediately if damage is visible or if unit stops or operates intermittently.

## STORAGE

When not in use, your appliance is easy to store. Allow appliance to cool, then store out of reach of children in a safe, dry location. Do not jerk or strain cord at plug connections.

## ALWAYS UNPLUG SMALL APPLIANCES

Everyone knows that electricity and water are a dangerous combination. But did you know that an electric appliance is still electrically live even if the switch is off? If the plug is in, the power is on. So when you are not using your appliances, keep them unplugged.



## KEEP AWAY FROM WATER

**WARNING:  
IF YOU THINK  
THE POWER IS OFF  
WHEN THE SWITCH  
IS OFF,  
YOU'RE WRONG.**